



APPENDIX L

Groundwater Level Monitoring Program

**TABLE L-1
SUMMARY OF MONITORING WELL COMPLETION DETAILS
CRRRC SITE**

12-1125-0045

Well ID	Easting	Northing	Hydraulic Conductivity (m/s)	Ground Surface Elevation	Top of Casing Elevation (masl)	Material	Top of Sand Pack Interval (mbgs)	Bottom of Sand Pack Interval (mbgs)
12-1-3.1	467124	5020301	2E-07	76.10	76.84	Upper Bedrock	40.1	44.8
12-1-4A	467126	5020300	3E-06	76.08	77.03	Glacial Till	36.0	39.5
12-1-4B	467126	5020300	-	76.08	77.01	Deep Clay	27.0	31.0
12-1-5A	467122	5020302	-	76.06	76.87	Middle Clay	12.8	15.3
12-1-5B	467122	5020302	1E-07	76.06	76.84	Shallow Clay with Silty Layer	4.0	6.0
12-1-6	467123	5020299	9E-08	76.06	76.82	Surficial Silty Sand	0.3	1.5
12-2-3	466157	5019604	2E-05	76.94	77.77	Upper Bedrock	37.0	42.0
12-2-4	466154	5019605	-	77.09	77.95	Deep Clay	30.0	32.2
12-2-5A	466158	5019607	-	76.99	77.82	Mid Clay	18.6	20.7
12-2-5B	466158	5019607	3E-07	76.99	77.77	Shallow Clay with Silty Layer	3.8	7.6
12-2-6	466155	5019608	2E-05	77.13	78.07	Surficial Silty Sand	0.4	2.3
12-3-3	466671	5021579	3E-06	76.22	77.00	Bedrock	40.1	45.4
12-3-4A	466673	5021576	2E-06	76.23	77.20	Glacial Till	35.0	38.7
12-3-4B	466673	5021576	-	76.23	77.20	Deep Clay	28.1	30.5
12-3-5A	466668	5021577	-	76.23	77.18	Middle Clay	13.8	15.8
12-3-5B	466668	5021577	2E-07	76.23	77.21	Shallow Clay with Silty Layer	4.0	6.1
12-3-6	466670	5021574	5E-06	76.27	77.09	Surficial Silty Sand	0.3	1.5
12-4-3	466523	5020873	2E-08	75.92	77.03	Upper Bedrock	38.5	43.6
12-4-4A	466522	5020876	2E-04	75.88	76.95	Glacial Till	34.8	36.7
12-4-4B	466522	5020876	-	75.88	76.98	Deep Clay	25.9	28.7
12-4-5A	466520	5020872	-	75.90	77.16	Middle Clay	14.0	16.2
12-4-5B	466520	5020872	7E-07	75.90	77.17	Shallow Clay with Silty Layer	3.5	6.0
12-4-6	466519	5020874	3E-06	75.89	77.20	Surficial Silty Sand	0.3	1.6
13-5-3	466176	5021083	5E-06	76.51	77.45	Bedrock	35.3	40.3
13-5-4A	466179	5021084	2E-06	76.43	77.40	Glacial Till	28.7	31.1
13-5-4B	466179	5021084	-	76.43	77.44	Mid Clay	14.0	16.5
13-5-5	466177	5021081	7E-07	76.38	77.39	Shallow Clay with Silty Layer	4.0	6.1
13-5-6	466179	5021081	9E-06	76.45	77.38	Surficial Silty Sand	0.3	1.5
13-6-3	465917	5020387	2E-07	76.69	77.65	Upper Bedrock	41.4	45.1
13-6-4A	465918	5020390	6E-07	76.69	77.67	Glacial Till	33.0	35.6
13-6-4B	465918	5020390	-	76.69	77.63	Deep Clay	25.7	31.7
13-6-5A	465920	5020386	-	76.60	77.61	Middle Clay	14.4	16.6
13-6-5B	465920	5020386	7E-07	76.60	77.63	Shallow Clay with Silty Layer	4.6	7.3
13-6-6	465917	5020387	8E-06	76.64	77.63	Surficial Silty Sand	0.6	1.6
13-7-2	466559	5020090	2E-07	76.35	77.23	Bedrock	34.6	39.5
13-7-3	466532	5020085	8E-09	76.35	77.46	Glacial Till	28.0	30.3
13-7-4-1	466536	5020088	-	76.38	77.38	Middle Clay	14.5	16.8
13-7-4-2	466536	5020089	8E-08	76.33	77.34	Shallow Clay with Silty Layer	4.4	6.4
13-7-5	466532	5020088	2E-06	76.35	77.52	Surficial Silty Sand	0.5	1.7
13-8-2	466032	5021437	1E-06	76.41	77.47	Surficial Silty Sand	0.3	1.5
13-8-3	466036	5021438	7E-09	76.43	77.37	Shallow Clay with Silty Layer	4.0	7.0
13-9-2	466350	5021533	-	76.05	77.20	Surficial Silty Sand	0.3	1.5
13-9-3	466347	5021536	-	76.08	77.14	Shallow Clay with Silty Layer	4.1	6.4
13-10-2	466456	5021246	2E-06	76.41	77.48	Surficial Silty Sand	0.3	1.5
13-10-3	466453	5021245	-	76.46	77.49	Shallow Clay with Silty Layer	4.0	7.0
13-11-2	466865	5021059	-	76.03	77.08	Surficial Silty Sand	0.3	1.5
13-12-2	466278	5020785	4E-06	76.19	77.28	Surficial Silty Sand	0.3	1.5
13-12-3	466284	5020781	5E-07	76.27	77.22	Shallow Clay with Silty Layer	4.0	7.0
13-13-2	466753	5021366	5E-07	76.21	77.15	Surficial Silty Sand	0.3	1.5
13-14-2	466088	5020308	-	76.48	77.50	Surficial Sand with Weathered Crust	0.3	1.5
13-15-2	466407	5020426	-	76.31	77.30	Surficial Silty Sand	0.3	1.5
13-15-3	466409	5020429	-	76.26	77.23	Shallow Clay with Silty Layer	4.0	7.0
13-16-2	466705	5020533	-	76.04	77.07	Surficial Silty Sand	0.3	1.5
13-17-2	466998	5020641	1E-06	75.99	76.99	Surficial Silty Sand	0.3	1.5
13-17-3	467002	5020640	4E-07	76.04	76.99	Shallow Clay with Silty Layer	4.0	7.0
13-18-2	465852	5019945	1E-05	76.90	77.89	Surficial Silty Sand	0.3	1.5
13-18-3	465847	5019936	2E-07	76.86	77.79	Shallow Clay with Silty Layer	4.0	7.0
13-19-2	466204	5019954	-	76.68	77.67	Surficial Sand and Weathered Clay	0.3	1.5
13-20-2	466835	5020207	-	76.21	77.13	Surficial Sand and Weathered Clay	0.3	1.5
13-21-2	465950	5019673	3E-06	77.41	78.43	Surficial Silty Sand	0.3	1.5
13-22-2	466332	5019636	-	76.59	77.55	Surficial Sand and Weathered Clay	0.3	1.5
13-23-2	466608	5019742	-	76.51	77.57	Surficial Sand and Weathered Clay	0.3	1.5
13-23-3	466606	5019742	-	76.53	77.50	Shallow Clay with Silty Layer	4.0	7.0
13-24-2	466958	5019877	2E-06	76.11	77.25	Surficial Silty Sand	0.3	1.5
13-25-2	467254	5019999	-	75.99	77.08	Surficial Silty Sand	0.3	1.5
13-25-3	467250	5020011	-	75.98	77.15	Shallow Clay with Silty Layer	4.0	7.0
A13-1	465500	5020864	-	77.22	77.18	Surficial Silty Sand	0.5	3.1
A13-2	465535	5020877	-	77.48	77.46	Surficial Silty Sand	0.8	3.1
B13-1	not surveyed	not surveyed	-	not surveyed	not surveyed	Surficial Silty Sand	0.6	3.4
B13-2	not surveyed	not surveyed	-	not surveyed	not surveyed	Surficial Silty Sand	0.6	3.5
B13-3	not surveyed	not surveyed	-	not surveyed	not surveyed	Surficial Silty Sand	0.9	2.2
B13-4	not surveyed	not surveyed	-	not surveyed	not surveyed	Surficial Silty Sand	0.8	2.0
B13-5	not surveyed	not surveyed	-	not surveyed	not surveyed	Shallow Clay with Silty Layer	4.9	6.3
B13-6	not surveyed	not surveyed	-	not surveyed	not surveyed	Surficial Silty Sand	0.6	1.5
B13-7	not surveyed	not surveyed	-	not surveyed	not surveyed	Shallow Clay with Silty Layer	5.2	6.4
B13-8	not surveyed	not surveyed	-	not surveyed	not surveyed	Surficial Silty Sand	0.8	2.7
B13-9	not surveyed	not surveyed	-	not surveyed	not surveyed	Surficial Silty Sand	0.6	2.4
B13-10	not surveyed	not surveyed	-	not surveyed	not surveyed	Surficial Silty Sand	0.7	2.3

TABLE L-2
MONTHLY GROUNDWATER ELEVATIONS
CRRRC SITE

Well Location	Ground Surface Elevation (masl)	TOP Elevation (masl)	Groundwater Elevations (masl)										
			22-Jan-13	19-Feb-13	29-Apr-13	17-May-13	10-Jun-13	23-Jul-13	15-Aug-13	24-Sep-13	16-Oct-13	12-Nov-13	4-Dec-13
12-1-3.1	76.10	76.84	74.56	74.64	74.59	74.57	74.58	74.67	74.61	74.60	74.64	74.66	74.72
12-1-4A	76.08	77.03	74.42	74.55	74.53	74.52	74.47	74.53	74.50	74.44	74.49	74.61	74.67
12-1-4B	76.08	77.01	74.47	74.55	74.49	74.47	74.49	74.57	74.52	74.50	74.55	74.61	74.46
12-1-5A	76.06	76.87	frozen	frozen	75.29	75.36	75.29	75.19	75.17	75.21	75.25	75.30	75.31
12-1-5B	76.06	76.84	75.68	nm	75.47	75.44	75.51	75.34	75.38	75.49	75.54	75.56	75.56
12-1-6	76.06	76.82	frozen	frozen	75.94	75.53	76.02	75.76	75.52	75.91	75.91	75.92	frozen
12-2-3	76.94	77.77	75.11	75.14	75.14	75.11	75.15	75.17	75.17	75.21	75.27	75.24	75.31
12-2-4	77.09	77.95	65.06*	75.52	75.30	75.31	75.26	75.28	75.28	75.17	75.31	75.35	75.50
12-2-5A	76.99	77.82	frozen	frozen	75.17**	75.97	76.02	76.01	75.87	75.89	75.84	75.87	75.92
12-2-5B	76.99	77.77	76.07*	76.25	76.30	76.01	76.34	76.35	76.23	76.25	76.18	76.33	76.42
12-2-6	77.13	78.07	76.64	76.55	76.69	76.52	76.58	76.61	75.99	76.84	76.40	76.67	76.67
12-3-3	76.22	77.00	74.53	74.56	74.48	74.46	74.47	74.56	74.50	74.50	74.56	74.52	74.57
12-3-4A	76.23	77.20	74.59	74.62	74.54	74.52	74.52	74.68	74.62	74.62	74.70	74.64	74.82
12-3-4B	76.23	77.20	75.66	75.61	75.40	75.38	75.40	75.52	75.51	75.49	75.48	75.47	75.42
12-3-5A	76.23	77.18	frozen	frozen	75.48	75.47	75.48	75.49	75.48	75.49	75.51	75.56	75.62
12-3-5B	76.23	77.21	75.79	76.17	75.84	75.78	75.80	75.72	75.78	75.78	75.85	75.94	75.96
12-3-6	76.27	77.09	frozen	frozen	75.84	75.66	75.83	75.60	75.84	75.98	76.00	76.06	76.02
12-4-3	75.92	77.03	—	—	74.15	74.16	74.17	74.26	74.25	74.21	74.27	74.23	74.26
12-4-4A	75.88	76.95	—	—	74.50	74.47	74.48	74.56	74.53	74.50	74.57	74.54	74.55
12-4-4B	75.88	76.98	—	—	75.13	75.13	75.14	75.15	75.17	75.18	75.19	75.18	75.16
12-4-5A	75.90	77.16	—	—	75.44	75.42	75.44	75.38	75.37	75.37	75.37	75.39	75.37
12-04-5B	75.90	77.17	—	—	75.68	75.64	75.65	75.72	75.75	75.94	75.79	75.82	75.80
12-04-6	75.89	77.20	—	—	75.75	75.53	75.71	75.91	75.86	75.97	75.97	76.00	75.94
13-5-3	76.51	77.45	—	—	—	—	—	74.55	74.48	75.95**	74.57	74.54	74.57
13-5-4A	76.43	77.40	—	—	74.49	74.51	74.53	74.52	74.49	75.37**	74.58	74.55	74.60
13-5-4B	76.43	77.44	—	—	74.76	74.71	74.71	74.79	74.56	74.75	74.73	74.70	74.66
13-5-5	76.38	77.39	—	—	76.13	75.86	75.87	75.82	75.65	76.26**	75.93	75.98	75.96
13-5-6	76.45	77.38	—	—	76.00	75.45	75.54	75.60	75.54	76.24	76.32	76.35	76.33
13-6-3	76.69	77.65	—	—	74.89	74.90	74.90	74.77	74.75	74.80	74.83	74.78	74.94
13-6-4A	76.69	77.67	—	—	75.05	74.99	75.00	74.93	74.93	74.94	75.00	74.94	75.07
13-6-4B	76.69	77.63	—	—	76.84	76.85	76.78	76.68	76.63	76.56	76.50	76.46	76.43
13-6-5A	76.60	77.61	—	—	76.21	76.14	76.11	76.03	76.00	75.96	75.96	76.01	75.98
13-6-5B	76.60	77.63	—	—	76.37	76.34	76.36	76.25	76.18	76.17	76.26	76.38	76.37
13-6-6	76.64	77.63	—	—	76.56	76.47	76.53	76.21	75.99	76.48	76.51	76.56	76.55
13-7-2	76.35	77.23	—	—	—	—	—	74.86	74.77	74.79	74.91	74.88	75.21
13-7-3	76.35	77.46	—	—	74.76	74.68	74.80	74.82	74.75	74.81	74.79	74.76	74.94
13-7-4-1	76.38	77.38	—	—	75.54	75.52	75.69	75.71	75.58	75.61	75.66	75.68	75.74
13-7-4-2	76.33	77.34	—	—	76.17	76.09	76.21	76.20	76.10	76.09	76.16	76.19	76.31
13-7-5	76.35	77.52	—	—	76.36	76.29	76.37	76.38	76.15	76.33	76.33	76.37	76.36

TABLE L-2
MONTHLY GROUNDWATER ELEVATIONS
CRRRC SITE

Well Location	Ground Surface Elevation (masl)	TOP Elevation (masl)	Groundwater Elevations (masl)										
			22-Jan-13	19-Feb-13	29-Apr-13	17-May-13	10-Jun-13	23-Jul-13	15-Aug-13	24-Sep-13	16-Oct-13	12-Nov-13	4-Dec-13
13-8-2	76.41	77.47	—	—	76.41	76.20	76.22	75.72	75.55	75.74	75.82	75.84	75.82
13-8-3	76.43	77.37	—	—	76.02	75.95	75.96	75.81	75.70	75.85	75.97	76.01	76.00
13-9-2	76.05	77.20	—	—	75.86	75.18	75.20	75.43	75.28	75.96	76.01	76.04	76.02
13-9-3	76.08	77.14	—	—	75.85	75.60	75.62	75.61	75.49	75.58	75.72	75.76	75.75
13-10-2	76.46	77.48	—	—	75.94	75.35	75.39	75.52	75.39	75.96	76.05	76.08	76.06
13-10-3	76.47	77.49	—	—	75.77	75.66	75.69	75.67	75.59	75.52	75.66	75.70	75.68
13-11-2	76.03	77.08	—	—	75.86	75.63	76.01	75.36	75.41	75.54	75.66	75.69	75.67
13-12-2	76.19	77.28	—	—	76.09	75.80	75.81	75.68	75.52	75.59	76.03	76.06	76.03
13-12-3	76.27	77.22	—	—	75.93	75.87	75.89	75.82	75.74	75.76	75.87	75.89	75.90
13-13-2	76.21	77.15	—	—	75.79	75.69	75.71	75.73	75.71	75.86	75.92	75.95	75.91
13-14-2	76.48	77.50	—	—	76.49	76.36	76.38	76.40	76.07	76.46	76.49	76.50	frozen
13-15-2	76.31	77.30	—	—	76.28	76.20	76.23	76.20	75.45	76.23	76.25	76.27	76.25
13-15-3	76.26	77.23	—	—	76.14	76.09	76.12	76.11	75.74	76.07	76.13	76.15	76.14
13-16-2	76.04	77.07	—	—	76.03	75.98	76.03	76.04	75.71	76.01	76.01	76.03	76.00
13-17-2	75.99	76.99	—	—	76.02	75.91	75.98	75.97	75.16	75.33	75.33	75.36	75.34
13-17-3	76.04	76.99	—	—	75.69	75.61	75.64	75.62	75.31	75.29	75.37	75.40	75.38
13-18-2	76.90	77.89	—	—	76.72	76.70	76.81	76.83	76.26	76.45	76.67	76.70	76.68
13-18-3	76.86	77.79	—	—	76.43	76.40	76.68	76.69	76.33	76.20	76.35	76.38	76.37
13-19-2	76.68	77.67	—	—	76.59	76.53	76.59	75.98	76.31	76.46	76.55	76.58	76.58
13-20-2	76.21	77.13	—	—	76.10	75.98	76.07	76.08	75.89	76.05	76.06	76.08	76.09
13-21-2	77.41	78.43	—	—	76.78	76.53	76.63	76.65	DRY	DRY	74.95	74.99	75.01
13-22-2	76.59	77.55	—	—	76.43	76.30	76.41	76.42	75.82	76.36	76.43	76.46	76.45
13-23-2	76.51	77.57	—	—	76.22	75.91	76.10	76.12	75.57	76.07	76.02	76.06	76.02
13-23-3	76.53	77.50	—	—	76.12	75.98	76.06	76.06	75.81	75.89	75.99	76.02	76.01
13-24-2	76.11	77.25	—	—	76.15	75.85	76.02	76.01	75.68	76.09	76.09	76.12	76.08
13-25-2	75.99	77.08	—	—	75.79	75.66	75.75	75.77	75.63	75.89	75.87	75.90	75.86
13-25-3	75.98	77.15	—	—	75.57	75.54	75.60	75.61	75.53	75.58	75.61	75.64	75.62
A13-1	77.22	77.18	—	—	—	—	—	76.10	76.49	nm	76.46	76.48	frozen
A13-2	77.48	77.46	—	—	—	—	—	76.40	76.47	nm	76.51	76.53	frozen

Notes:

— Monitoring well location not yet established

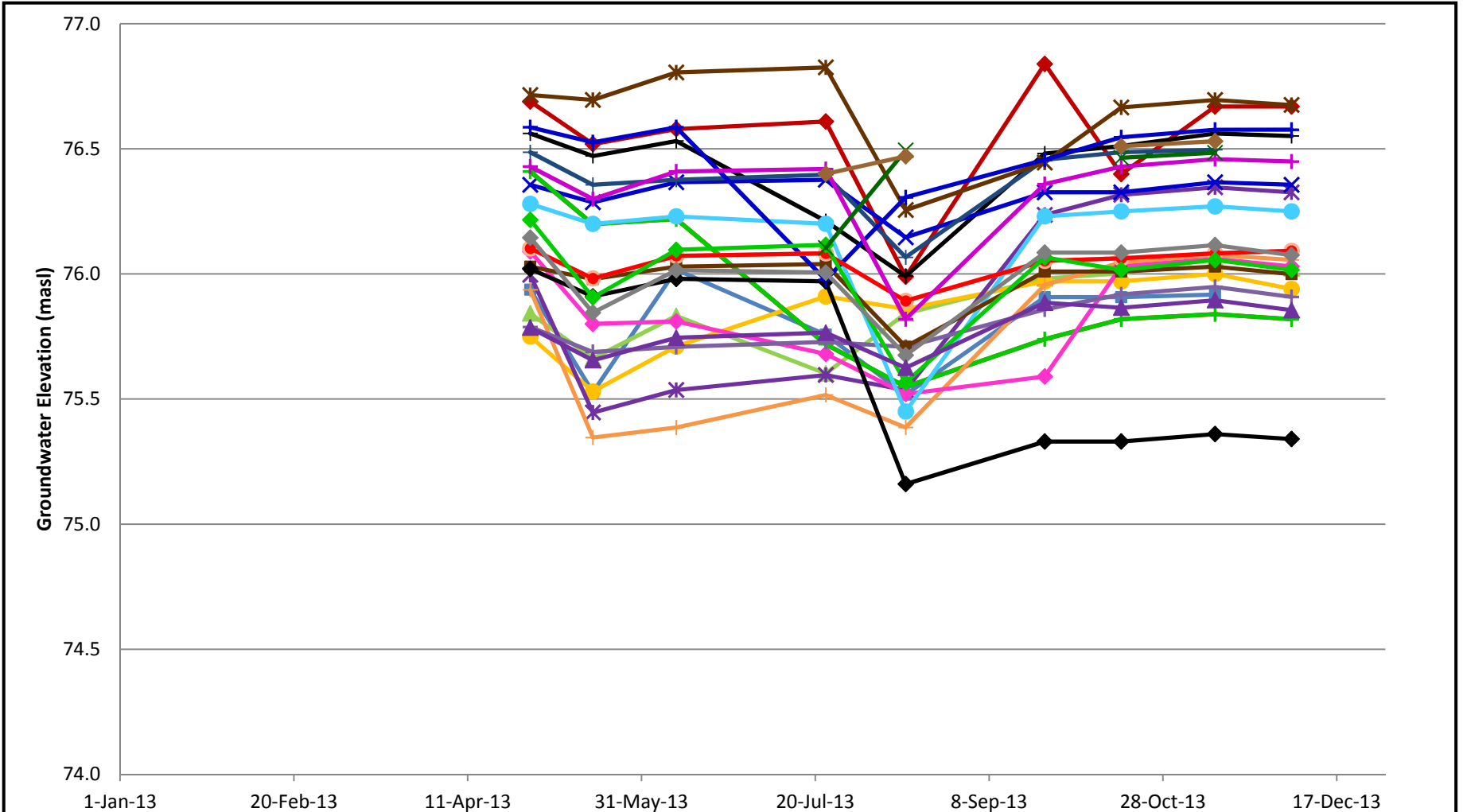
() Groundwater elevation prior to well development on January 21, 2013

* Non-stabilized groundwater elevation following well development

** Erroneous measurement

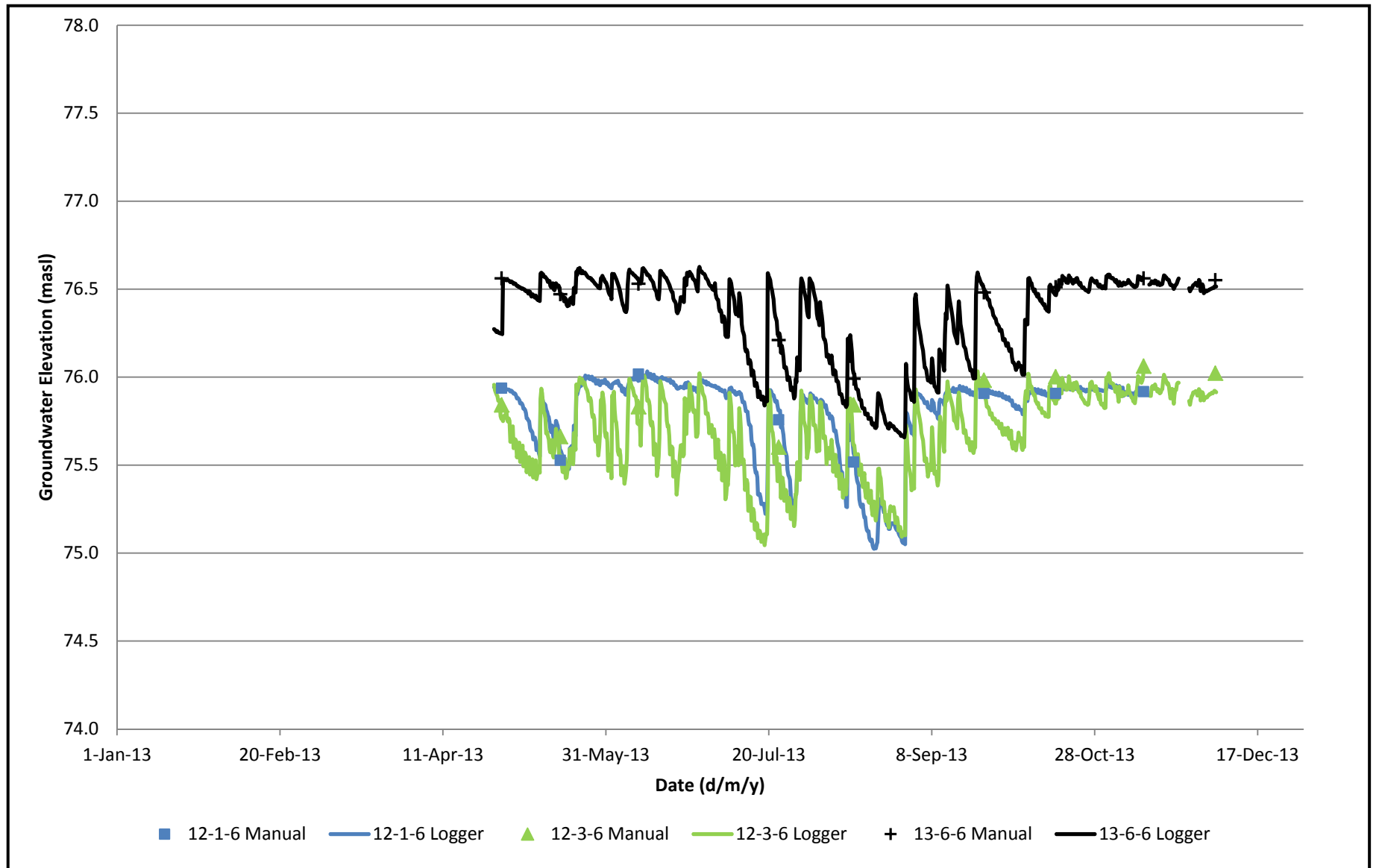
Dry - monitoring location was dry


nm - not monitored

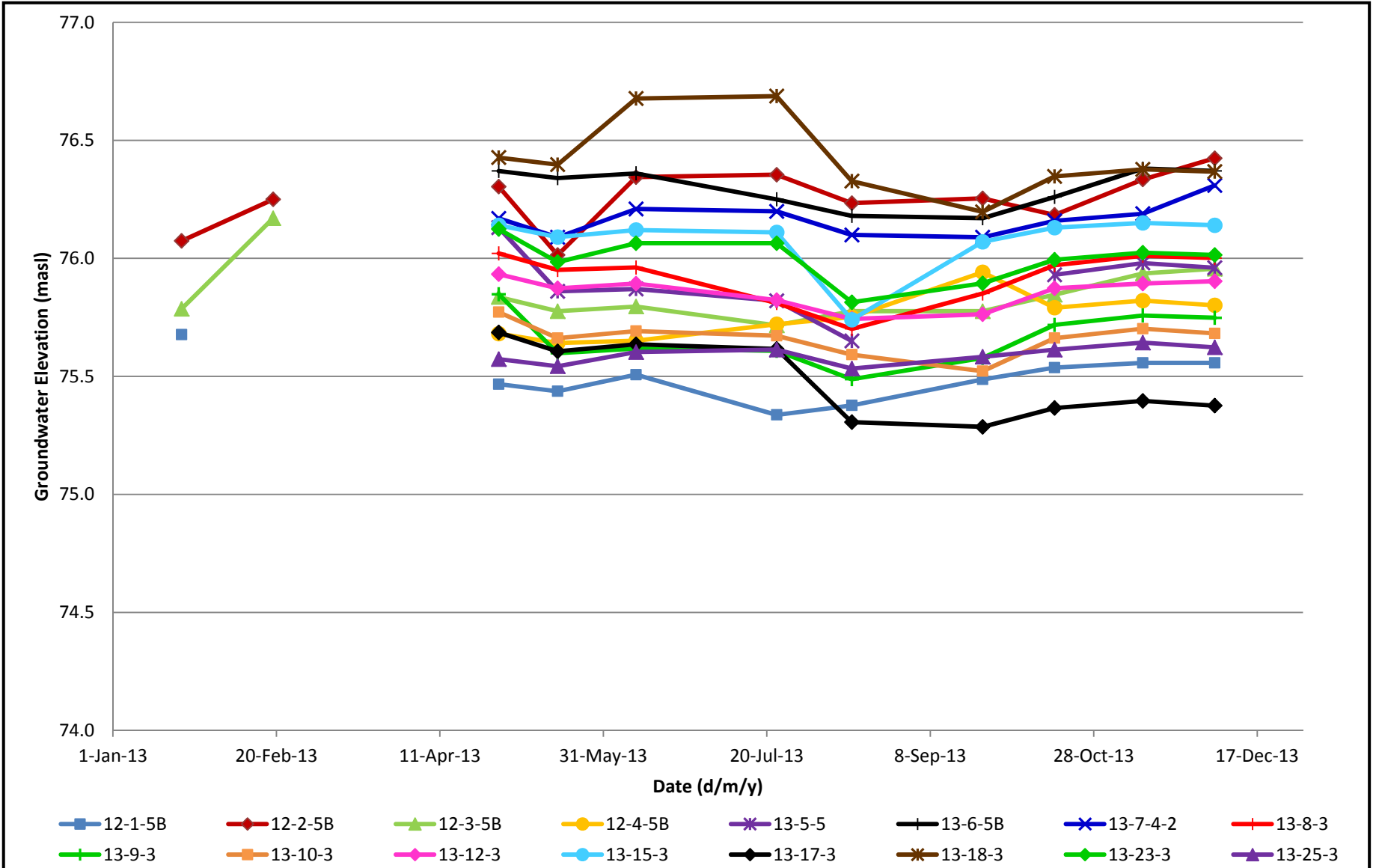



- Date**
- 12-1-6
 - 12-2-6
 - 12-3-6
 - 12-4-6
 - 13-5-6
 - 13-6-6
 - 13-7-5
 - 13-8-2
 - 13-9-2
 - 13-10-2
 - 13-12-2
 - 13-13-2
 - 13-14-2
 - 13-15-2
 - 13-16-2
 - 13-17-2
 - 13-18-2
 - 13-19-2
 - 13-20-2
 - 13-21-2
 - 13-22-2
 - 13-23-2
 - 13-24-2
 - 13-25-2
 - A13-1
 - A13-2

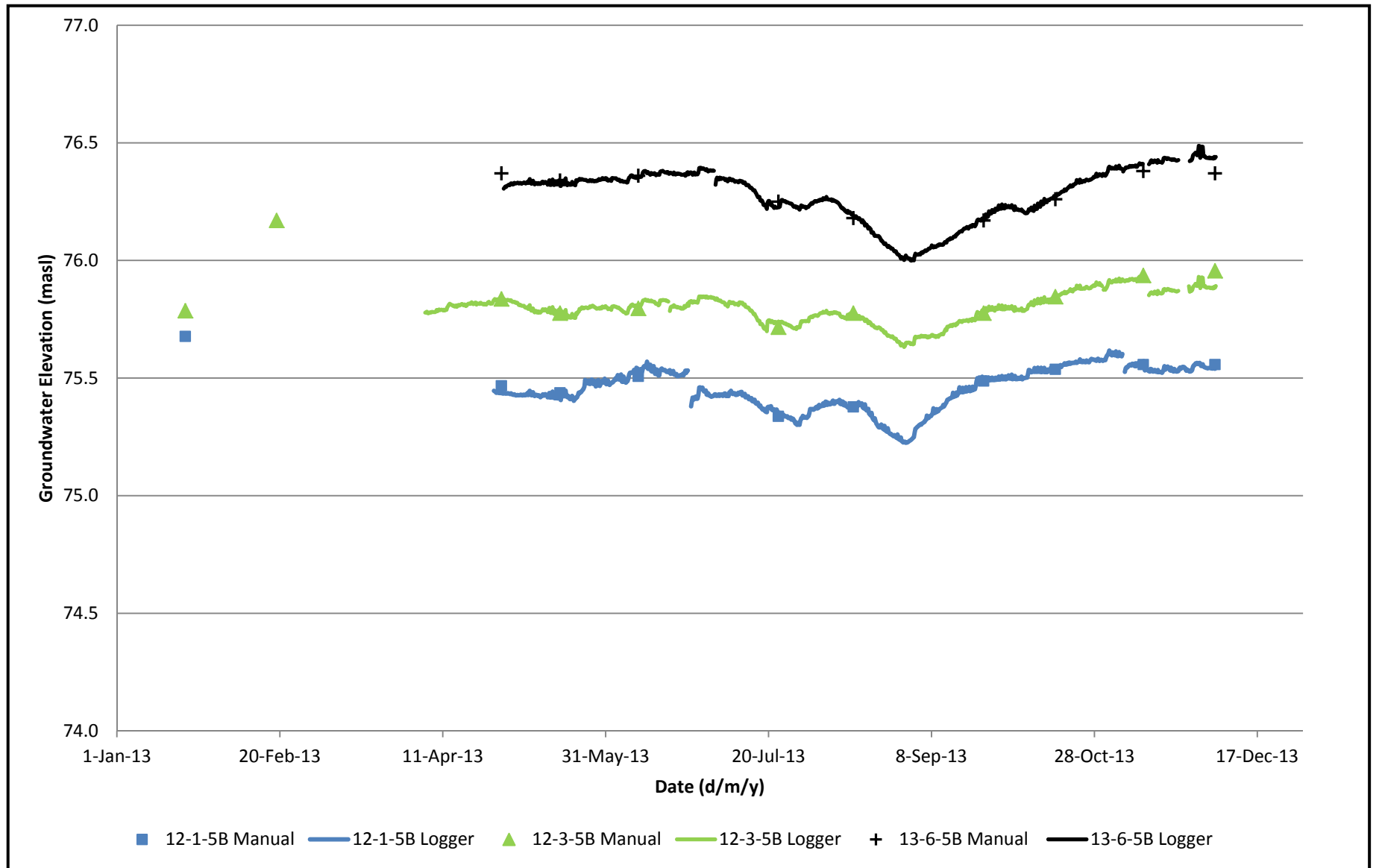
	PROJECT No. 12-1125-0045			PROJECT ENVIRONMENTAL ASSESSMENT OF THE CAPITAL REGION RESOURCE RECOVERY CENTRE	FIGURE L1
	Created by	DH	DEC2013		
	Reviewed by	JPAO	AUG 2014		




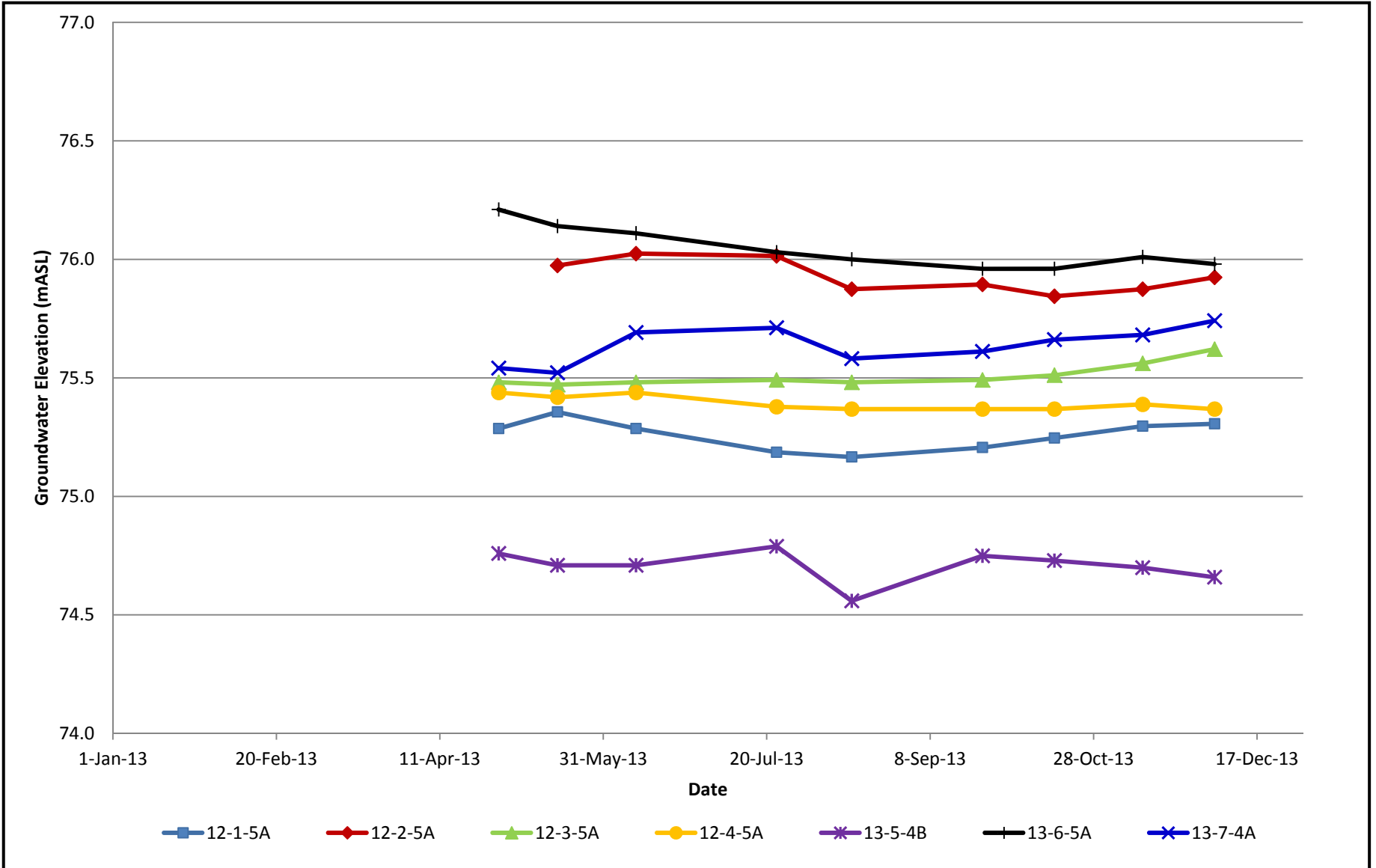
	PROJECT No. 12-1125-0045			PROJECT	ENVIRONMENTAL ASSESSMENT OF THE CAPITAL REGION RESOURCE RECOVERY CENTRE	FIGURE L2
	Created by	DH	DEC 2013	TITLE	Daily Groundwater Elevation Data for Surficial Silty Sand Monitoring Wells 12-1-6, 12-3-6 and 13-6-6	
	Reviewed by	JPAO	AUG 2014			




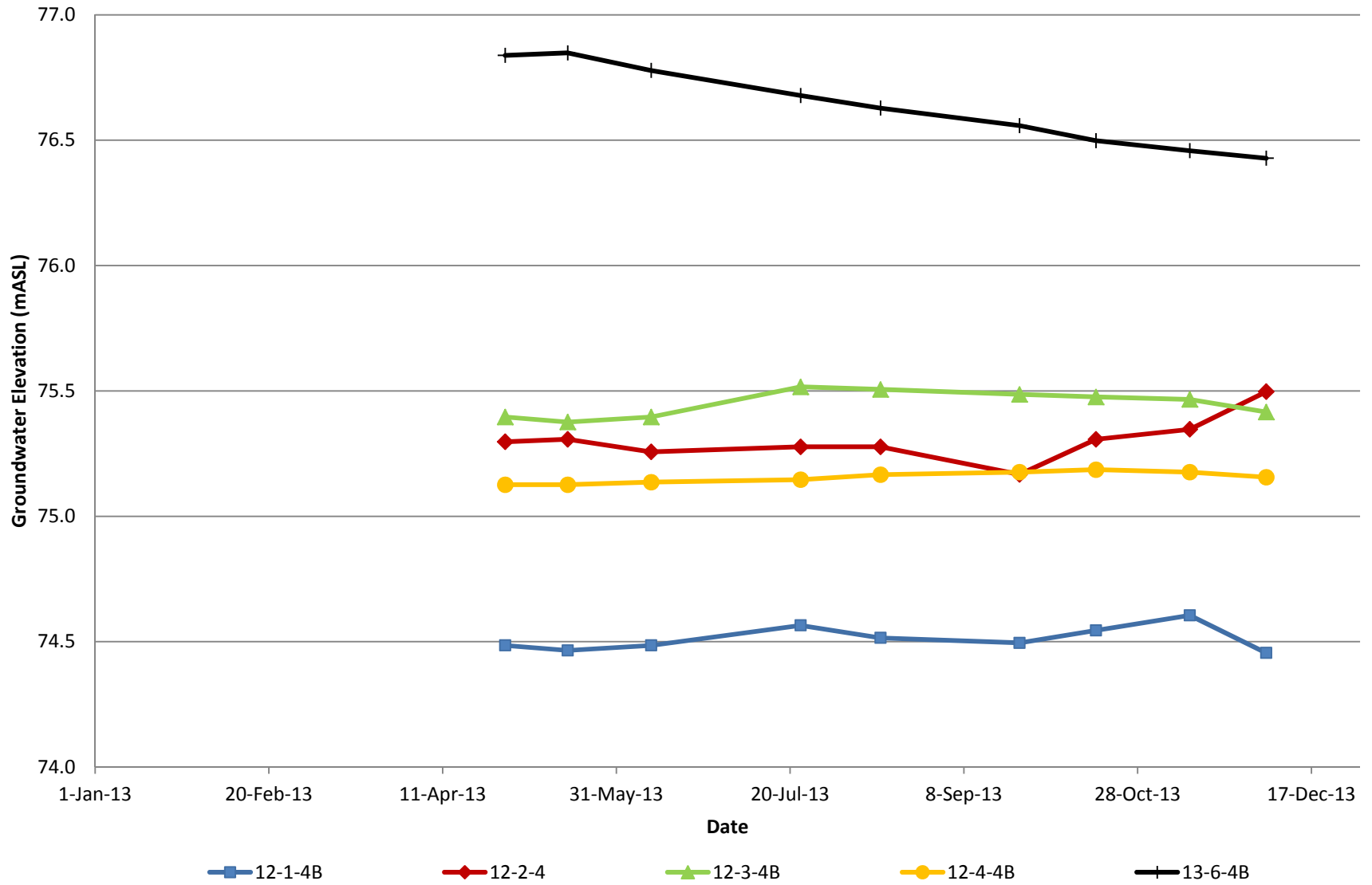
	PROJECT No. 12-1125-0045			PROJECT	ENVIRONMENTAL ASSESSMENT OF THE CAPITAL REGION RESOURCE RECOVERY CENTRE Monthly Groundwater Elevation Data for All Silty Layer Monitoring Wells	FIGURE L3
	Created by	DH	DEC 2013	TITLE		
	Reviewed by	JPAO	AUG 2014			



	PROJECT No. 12-1125-0045			PROJECT	ENVIRONMENTAL ASSESSMENT OF THE CAPITAL REGION RESOURCE RECOVERY CENTRE	FIGURE L4
	Created by	DH	DEC 2013	TITLE	Continuous Groundwater Elevation for Silty Layer Monitoring Wells 12-1-5B, 12-3-5B and 13-6-5B	
	Reviewed by	JPAO	AUG 2014			



	PROJECT No. 12-1125-0045			PROJECT	ENVIRONMENTAL ASSESSMENT OF THE CAPITAL REGION RESOURCE RECOVERY CENTRE	FIGURE L5
	Created by	DH	DEC 2013	TITLE	Monthly Groundwater Elevation Data for All Middle Silty Clay Monitoring Wells	
	Reviewed by	JPAO	AUG 2014			



PROJECT No. 12-1125-0045

Created by DH DEC 2013

Reviewed by JPAO AUG 2014

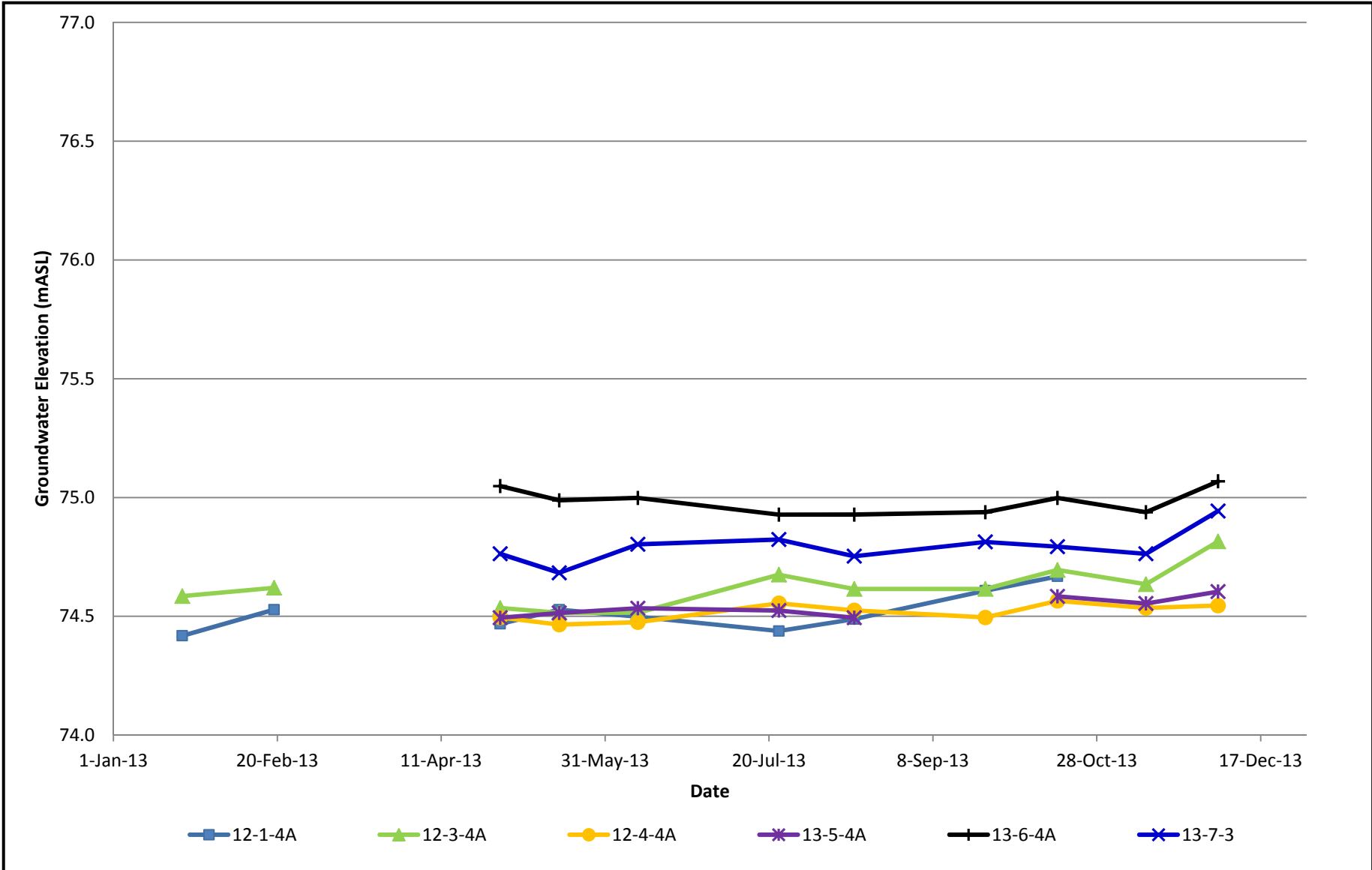
PROJECT


ENVIRONMENTAL ASSESSMENT OF THE
CAPITAL REGION RESOURCE RECOVERY CENTRE

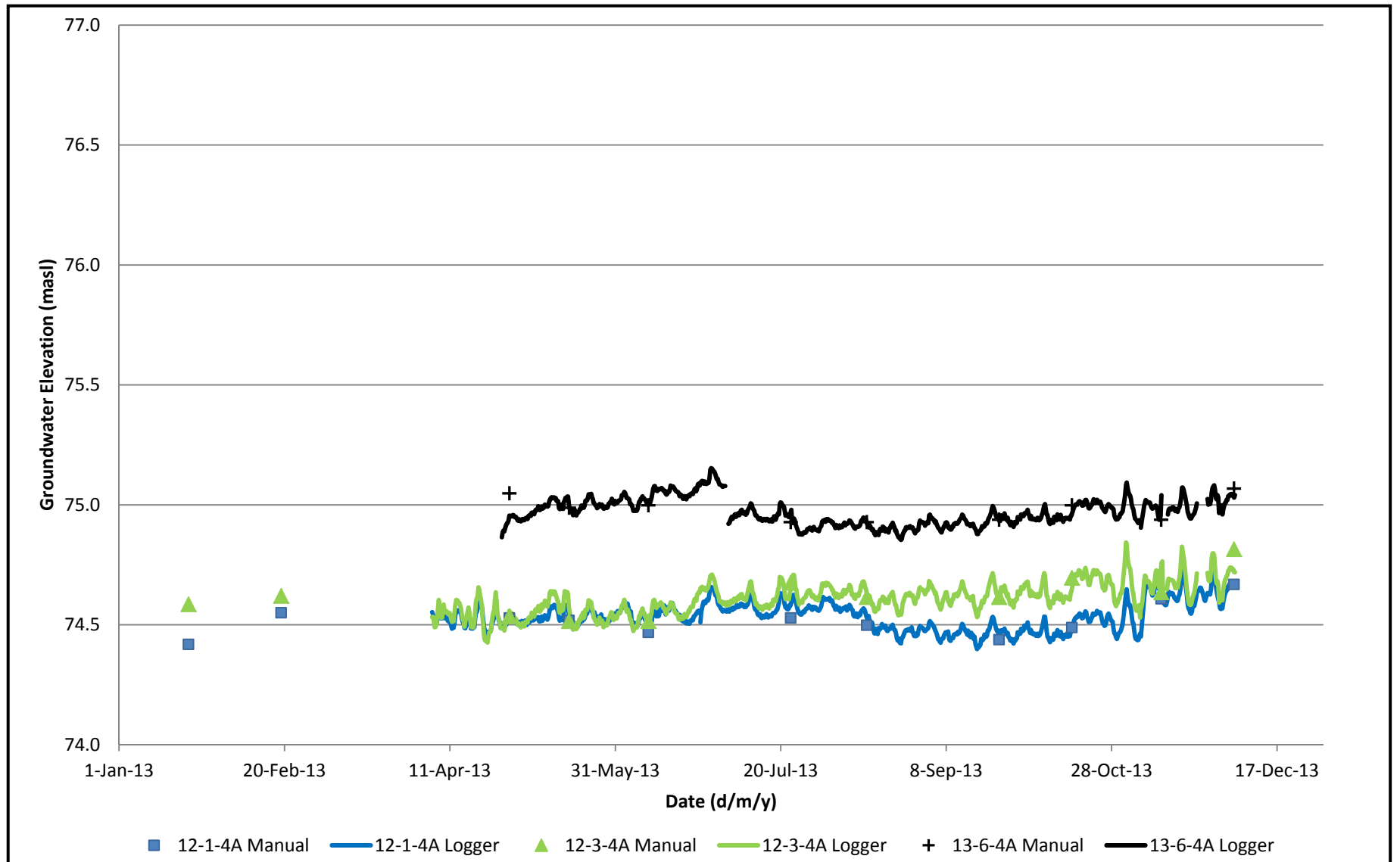
TITLE


Monthly Groundwater Elevation Data for
All Deep Silty Clay Monitoring Wells

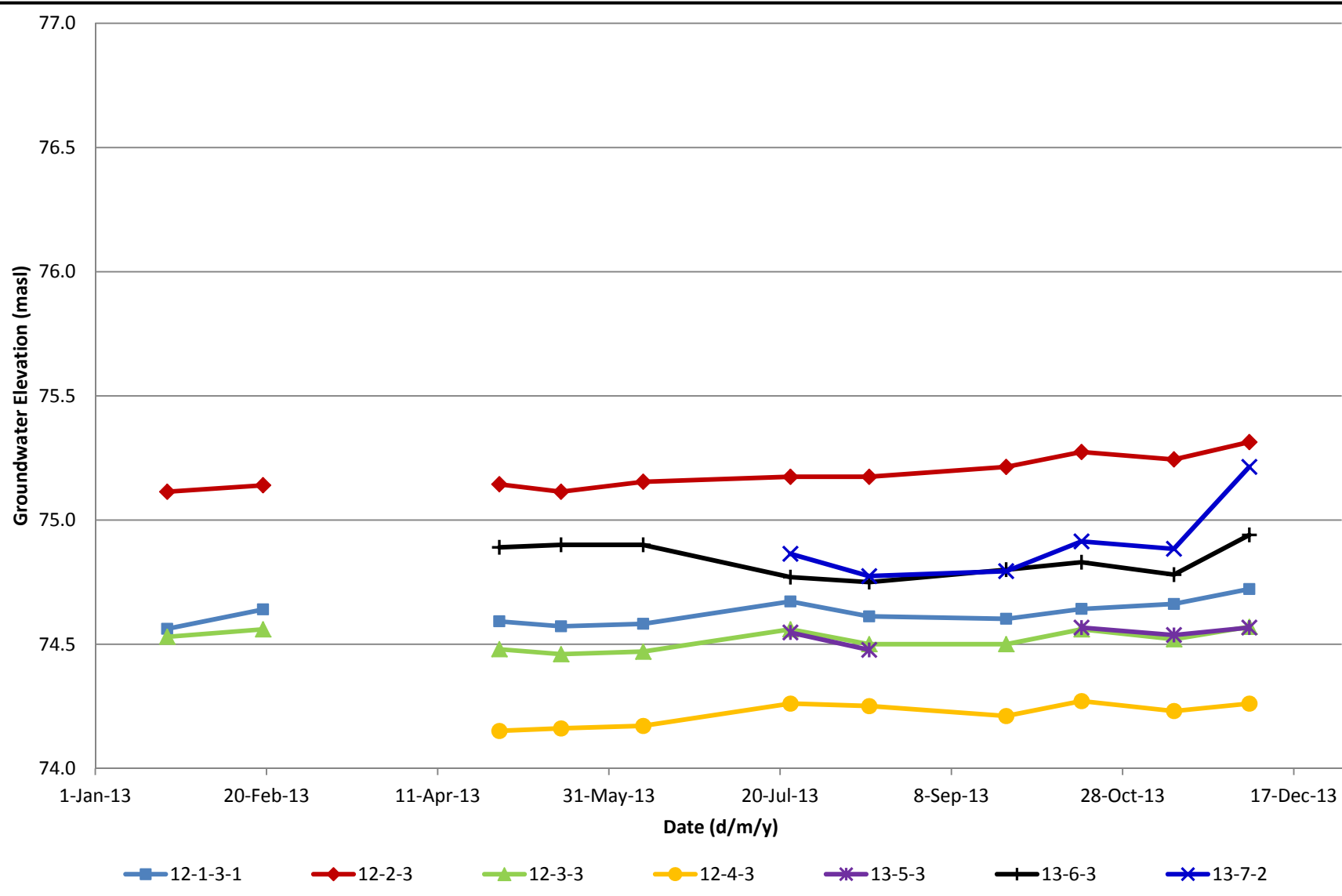
FIGURE L6




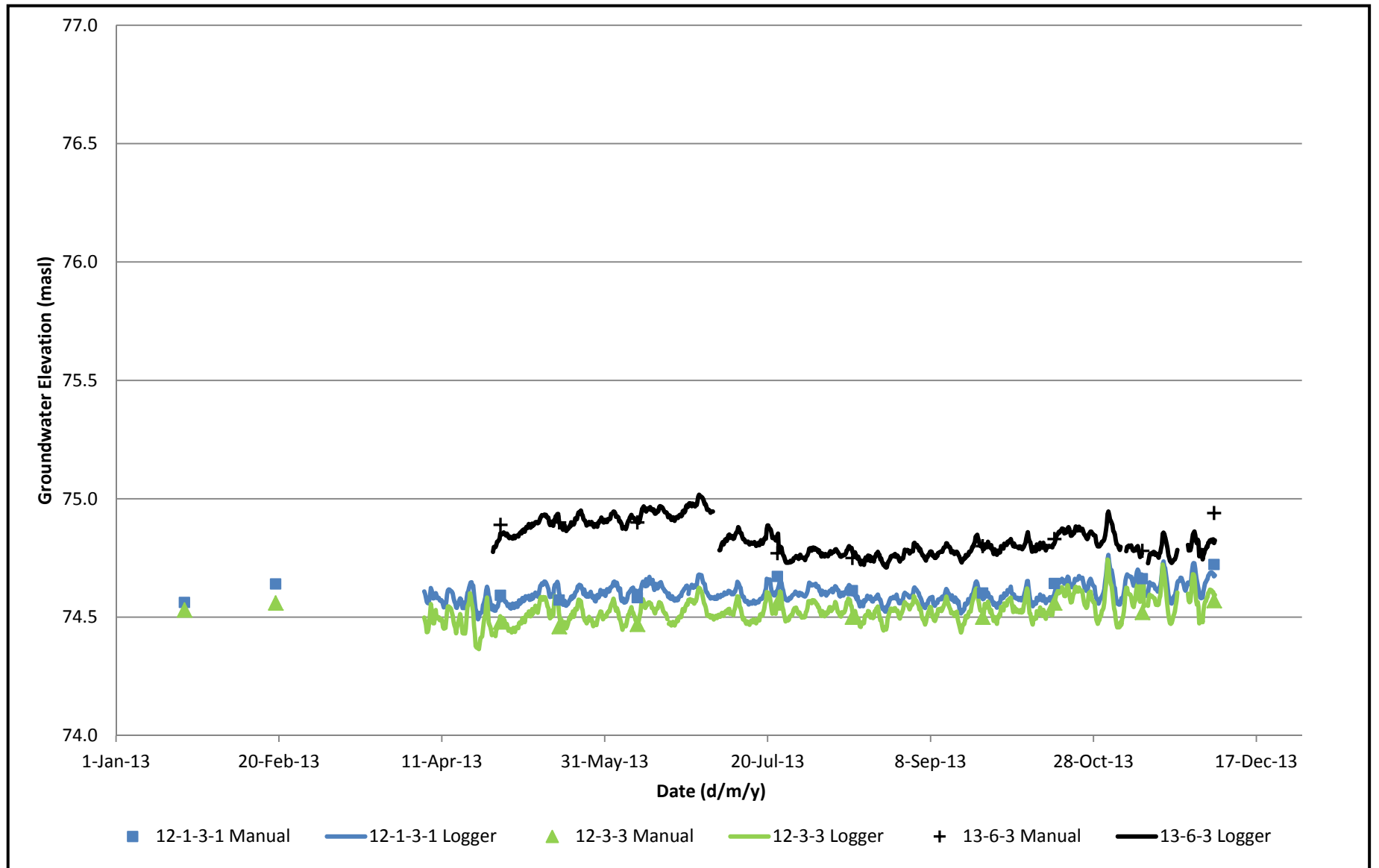
	PROJECT No. 12-1125-0045			PROJECT	ENVIRONMENTAL ASSESSMENT OF THE CAPITAL REGION RESOURCE RECOVERY CENTRE	FIGURE L7
	Created by	DH	DEC 2013	TITLE	Monthly Groundwater Elevation Data for All Glacial Till Monitoring Wells	
	Reviewed by	JPAO	AUG 2014			




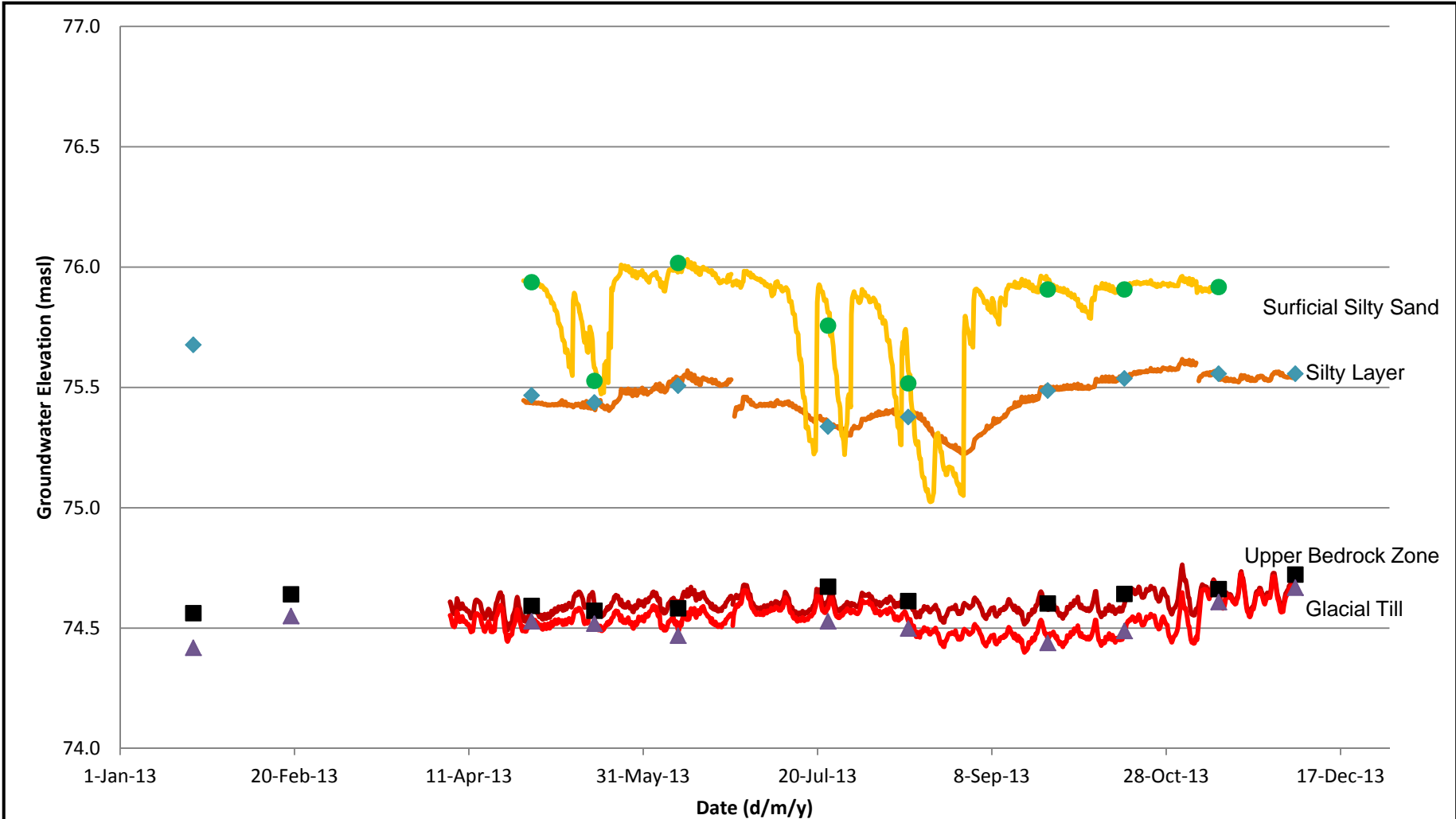
	PROJECT No. 12-1125-0045			PROJECT	ENVIRONMENTAL ASSESSMENT OF THE CAPITAL REGION RESOURCE RECOVERY CENTRE	FIGURE L8
	Created by	DH	DEC 2013	TITLE	Daily Groundwater Elevation for Glacial Till Monitoring Wells 12-1-4A, 12-3-4A and 13-6-4A	
	Reviewed by	JPAO	AUG 2014			




	PROJECT No. 12-1125-0045			PROJECT	ENVIRONMENTAL ASSESSMENT OF THE CAPITAL REGION RESOURCE RECOVERY CENTRE	FIGURE L9
	Created by	DH	DEC 2013	TITLE	Monthly Groundwater Elevation Data for All Upper Bedrock Zone Monitoring Wells	
	Reviewed by	JPAO	AUG 2014			

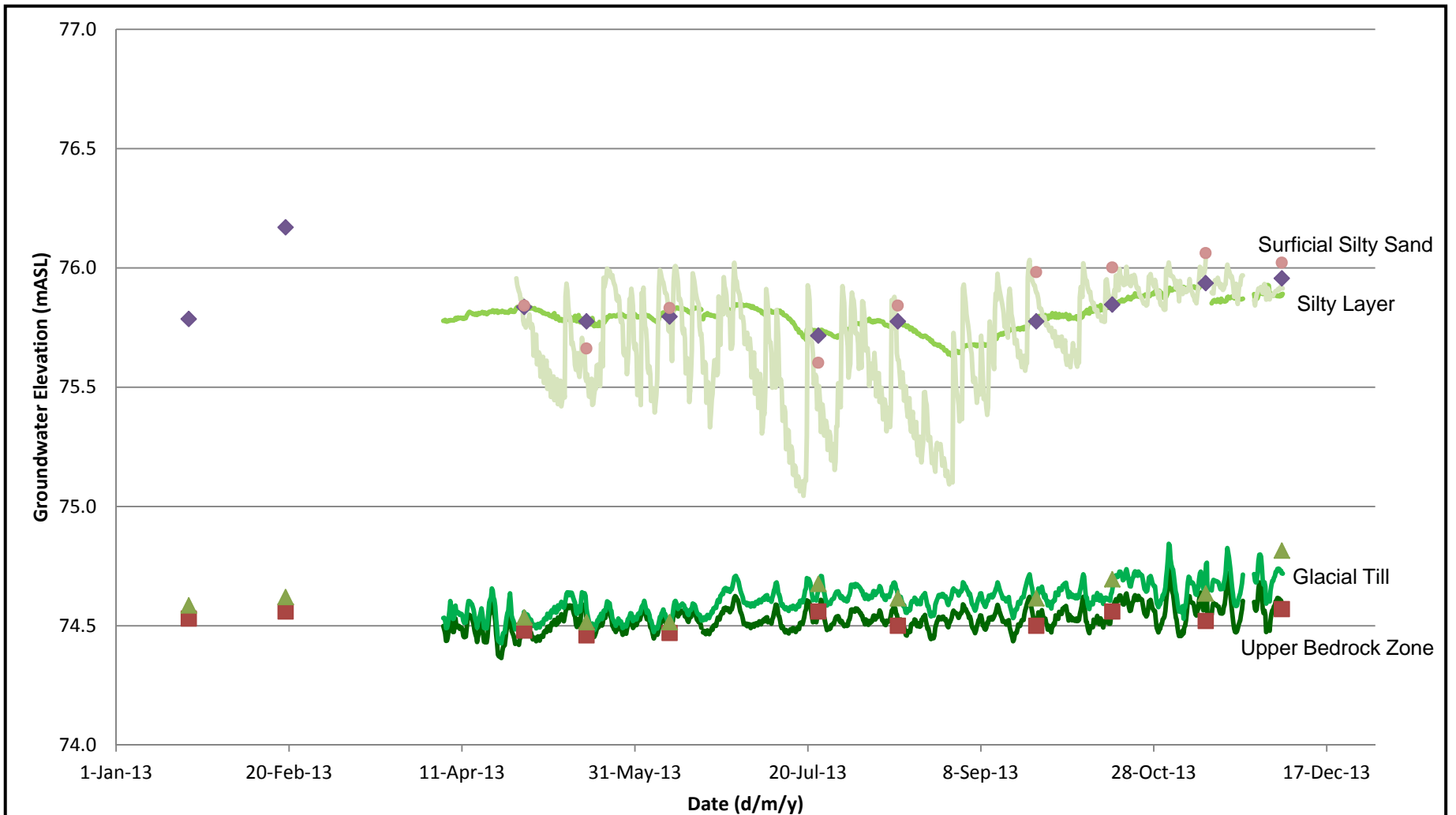


	PROJECT No. 12-1125-0045			PROJECT	ENVIRONMENTAL ASSESSMENT OF THE CAPITAL REGION RESOURCE RECOVERY CENTRE	FIGURE L10
	Created by	DH	DEC 2013	TITLE	Daily Groundwater Elevation for Upper Bedrock Zone Monitoring Wells 12-1-3-1, 12-3-3 and 13-6-3	
	Reviewed by	JPAO	AUG 2014			




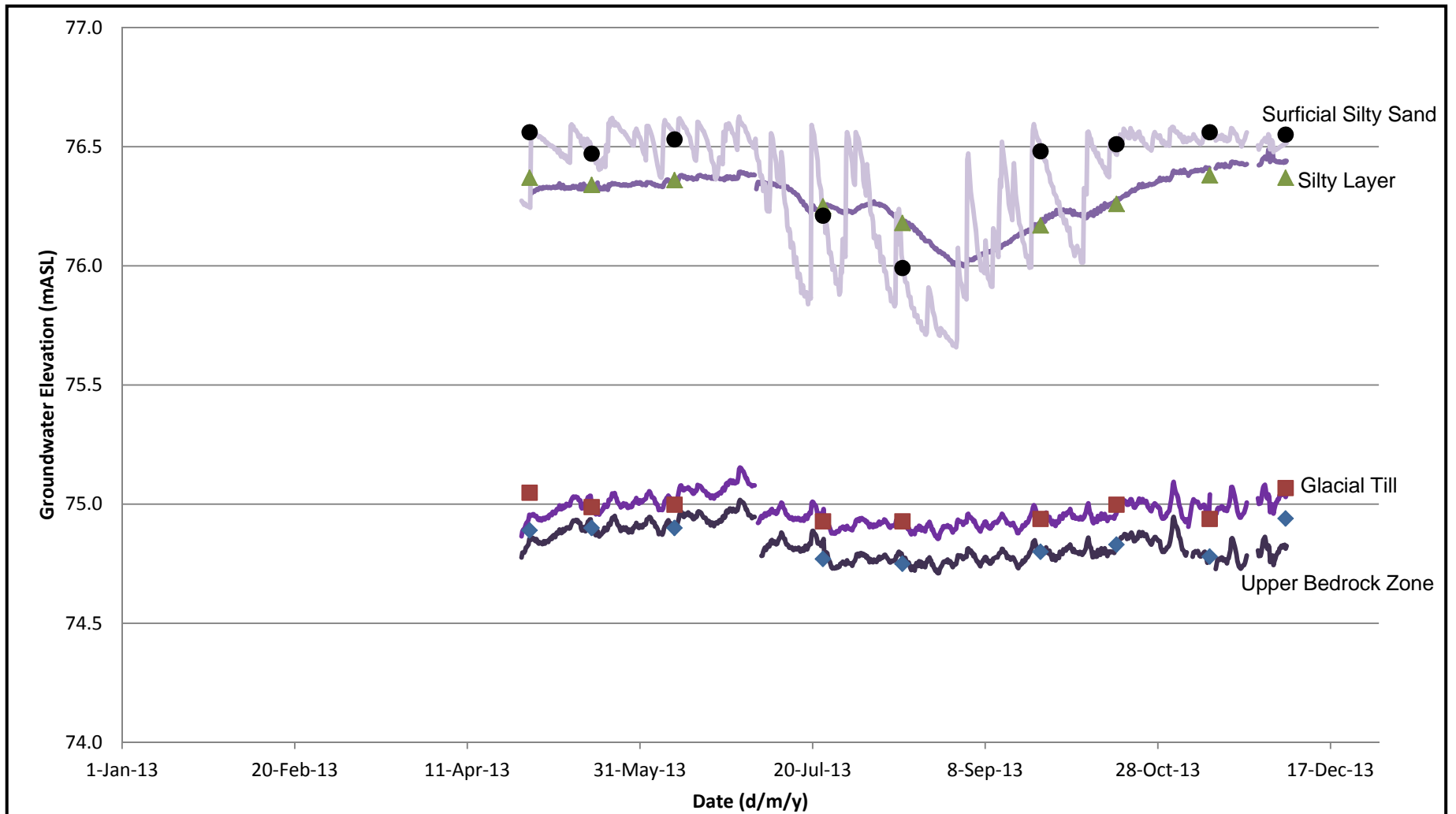
— 12-1-3-1 Logger — 12-1-4A Logger — 12-1-5B Logger — 12-1-6 Logger
■ 12-1-3-1 Manual ▲ 12-1-4A manual ◆ 12-1-5B Manual ● 12-1-6 Manual

	PROJECT No. 12-1125-0045			PROJECT ENVIRONMENTAL ASSESSMENT OF THE CAPITAL REGION RESOURCE RECOVERY CENTRE	FIGURE L11
	Created by	DH	DEC 2013		
	Reviewed by	JPAO	AUG 2014		




— 12-3-3 Logger — 12-3-4A Logger — 12-3-5B Logger — 12-3-6 Logger
 ■ 12-3-3 Manual ▲ 12-3-4A Manual ◆ 12-3-5B Manual ● 12-3-6 Manual

	PROJECT No. 12-1125-0045			PROJECT	ENVIRONMENTAL ASSESSMENT OF THE CAPITAL REGION RESOURCE RECOVERY CENTRE	FIGURE L12
	Created by	DH	DEC 2013	TITLE	Daily Groundwater Elevation Data for 12-3	
	Reviewed by	JPAO	AUG 2014			



- 13-6-3 Logger — 13-6-4A Logger — 13-6-5B Logger — 13-6-6 Logger
- ◆ 13-6-3 Manual ■ 13-6-4A Manual ▲ 13-6-5B Manual ● 13-6-6 Manual

	PROJECT No. 12-1125-0045			PROJECT ENVIRONMENTAL ASSESSMENT OF THE CAPITAL REGION RESOURCE RECOVERY CENTRE	FIGURE L13
	Created by	DH	DEC 2013		
	Reviewed by	JPAO	AUG 2014		